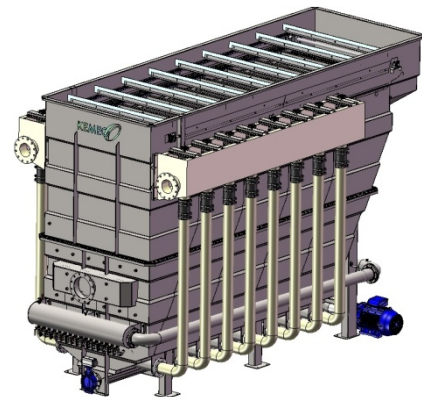
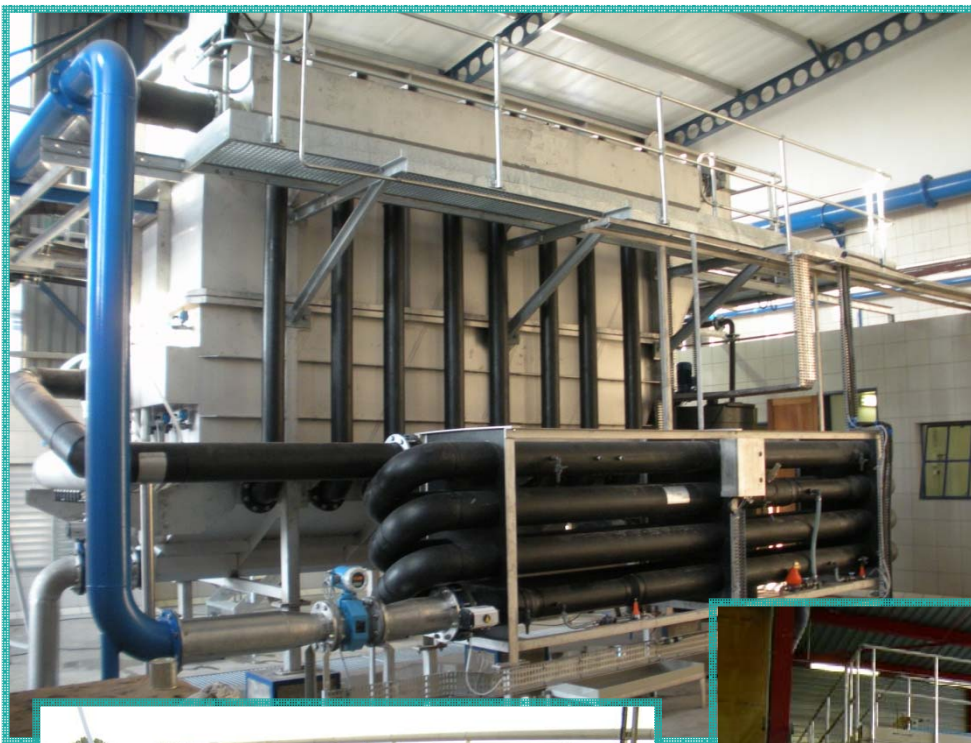


Flotation units with dissolved air GAMMA range

Flotation units with dissolved air allow accelerating the separation of water and suspended solids. Compact and simple of use, they make it possible to recover at the same time floated and settling particles, and produce rejections with strong content of dry matter.

- Simple of use
- Compact construction
- Capacity for treatment: 225 to 650 m³/h according to the models
- Low cost of maintenance
- Recovery of the solids on the surface and at the bottom of the flotation unit
- Single system of drainage of the recovered solids



Applications:

Food industry (dairy, slaughter-houses, fish industry, factories of transformations,...)

Petrochemical Industry

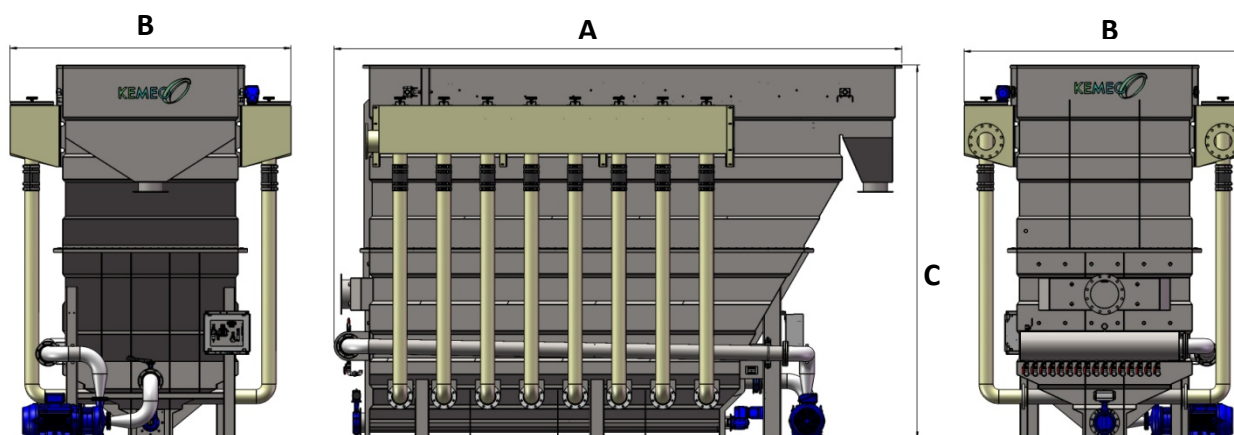
Paper Industry

Textile industry

Urban plants

Water treatment of ballast

	A (mm)	B (mm)	C (mm)	Débit (m³/h)
GAMMA 225	5700	3300	4600	225
GAMMA 300	6700	3300	4600	300
GAMMA 375	6700	3800	4600	375
GAMMA 450	6700	4000	4600	450
GAMMA 550	8200	4000	4600	550
GAMMA 650	8200	5400	4600	650



Operating principle:

